

Trichogramma Wasps

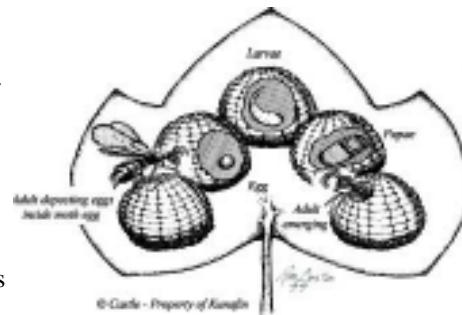
25,000 per Strip
4 Strips = 100,000



USE: Trichogramma is an efficient destroyer of eggs of many moth and butterflies which are the leaf-eaters in the larval stage. They search for over 200 species of eggs to parasitize. Trichogramma seeks out eggs, but does not feed on or harm vegetation. It is effective tool because it kills its host before the plant can be damaged. They can be used in a variety of crops as well as in horticultural and ornamental plants. Trichogramma are used extensively in a variety of crops including cotton, corn, tomatoes, avocados, walnuts, pecans, apples, alfalfa, etc.

Release Rates: In general, release rates are 1-4 per sq/ft for greenhouses. For outdoor gardens, use 50,000 for small areas (less than 2,000 sq/ft) or 100,000 per acre. In orchards release 100,000 to 300,000 per acre in 3 or more releases. A suggested release schedule is 50% of the total release rate the first week and 25% each on 2 bi-weekly releases.

Release Instructions: The wasps are shipped as pupae in parasitized moth eggs glued to small cards that can be attached by hand to infested plants or by nailing them to fence posts using the holes on the cards or by hanging them from tree limbs in orchards. Be careful not to touch the eggs. Allow from 1 -7 days for emergence. If you wish to separate the strips in half, it is preferable to do this prior to emer-



gence. Being careful not to touch the eggs, the cards can be divided up by carefully bending at the perforation line on the back of the card. Place the cards in a shaded spot upwind of the areas where moths are suspected or egg laying is occurring. Hang the strip using the hole on the edge of the card upwind of the foliage. The adult wasps will fly onto the plant in search of new host eggs to attack. Do not put the cards out before the wasps have emerged. The emerging wasps will have the best chance of finding and parasitizing eggs when protected. The best time to release is early morning or evening when direct sunlight will not hit the cards. Avoid making releases under extremely hot, cold, rainy or windy conditions.



HGI Worldwide, Inc.
PO Box 25845, Colorado Springs, CO 80936
800-634-6362 or 719-495-2266
<http://www.hydro-gardens.com>
E-Mail HGI@hydro-gardens.com